

Ordering #	Wall thickness
# SP3 A	0.125"
# SP3 C	0.188"
# SP3 E	0.250"

Pole Guide

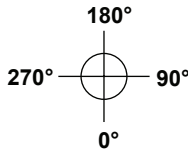
3"
Round
Steel

SP3

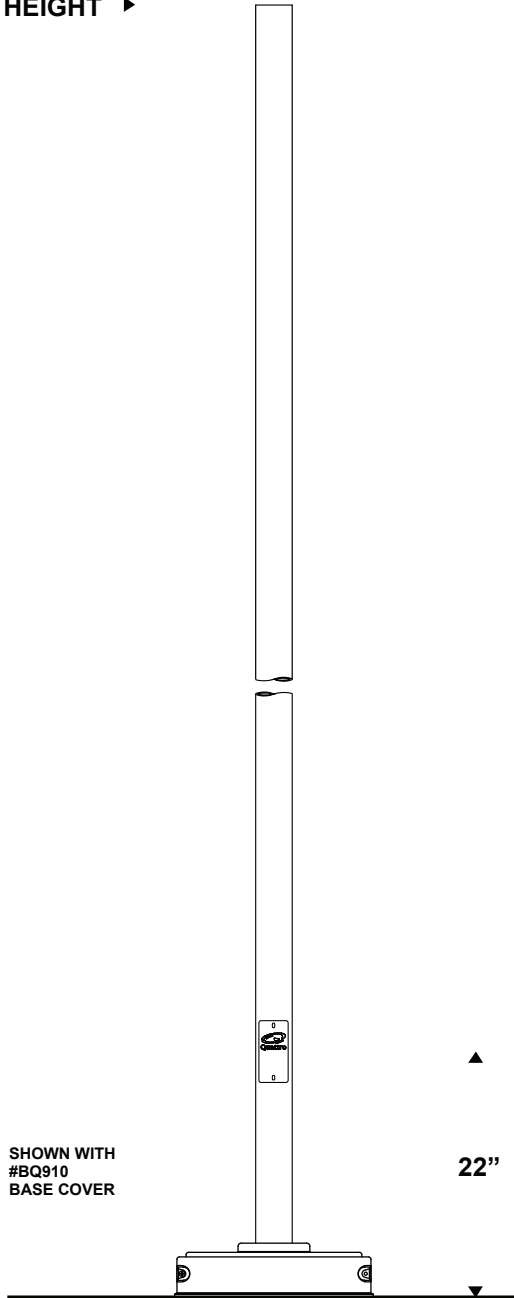
ORDERING INFO

POLE	HEIGHT	BASE COVER	COLOR	OPTION
SP3A	12	BQ910	BKTX	GFI

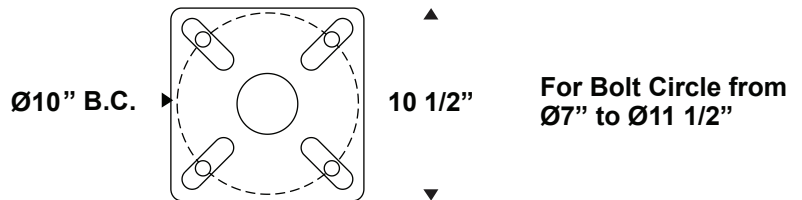
3" outside diameter pole made from a one piece high-tensile steel, rolled and sealed by a vertical flattened welding. The tube is welded to a steel anchor plate. An aluminum access door covers a hand hole (1 1/2" x 4.5") located at 22" from anchor plate. Complete with weatherproof gasket, pan phillips head type screws and ground bolt opposite to the door.



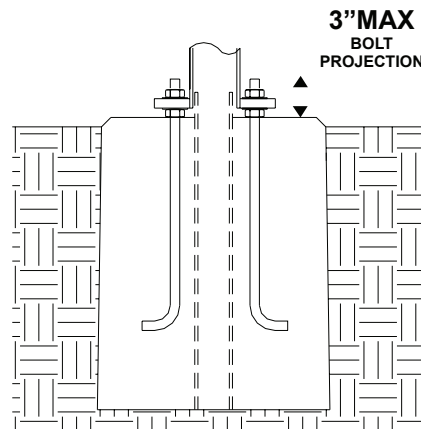
HEIGHT ▶



ANCHOR PLATE DETAIL



INSTALLATION DETAIL



For four (4x) 3/4-20 (17+3) galvanized anchor bolts c/w nuts and washers for leveling

OPTIONS

LF1 Single In-Line Fusing	GALV Galvanized
LF2 Double In-Line Fusing	TP Tamper Proof Screw (Access Door)
DR Duplex Receptacle c/w Cover	PBT Button Type Photocell
GFI Duplex Receptacle c/w Ground Fault Interrupter and Cover	PTL Twist Lock Photocell Receptacle
	PTL1 Twist Lock Photocell Receptacle c/w Painted Photocell Cover

COLOR

Consult color chart